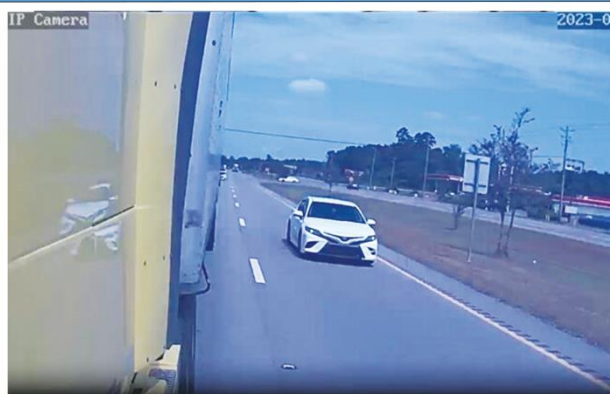


DCA01-SC

Auxiliary Side Camera



Product Description



The DCA01-SC (Auxiliary Side Camera) is the ultimate solution for enhancing fleet security and visibility. Designed for reliability, it connects via an Ethernet cable to ensure a stable and secure connection with a router, eliminating signal interference and guaranteeing consistent, high-quality footage. This versatile camera offers 1080p HD resolution, providing crisp, detailed images, and features 10-18 infrared (IR) LEDs with night vision, allowing you to capture clear footage up to 32 feet in total darkness. Its rugged, IP66-rated waterproof and dustproof design ensures durability in harsh environments, making it perfect for year-round use.

With the ability to expand up to four cameras, this system provides complete 360-degree coverage, eliminating blind spots and offering comprehensive monitoring of your fleet. It's a powerful tool for preventing false accident claims, enhancing driver safety, and protecting valuable cargo. Seamlessly compatible with FleetFix AI+ and Surfsight AI-12 systems, the camera integrates easily and can be set up in just a few simple steps. Whether you're safeguarding your property, ensuring compliance, or improving operational efficiency, the DCA01-SC (Auxiliary Side Camera) is a robust and reliable solution for your fleet's needs.

Hardware Features

- **Durable IP66-Rated Design:** Built to withstand tough conditions, ensuring reliable performance in any environment.
- **Expandable Coverage:** Supports up to 4 auxiliary cameras, enabling full 360-degree monitoring of your fleet.
- **Optional Magnetic Mounts:** Easy, drill-free installation with secure magnet mounts available.
- **Customizable Event Triggers:** Adjust event and trigger settings to capture the videos you need, exactly when you need them.
- **Automated Event Uploads:** Videos are automatically uploaded to the server based on events, enhancing driver safety and protecting your cargo.
- **Geotab Integration:** Seamlessly integrated into Geotab, allowing any Geotab vehicle rule to trigger a video event directly from the camera.





Fueling your fleet with intelligence.

Product Specifications

Tech Available
Live stream, Dual IR, 1080p, and
nighttime view

Video Availability
Live Stream, Event-based

Input Voltage
12V 2amp

Operating Temp
-10° to +85° C

Installation Methods Available
Hardwire powered

Video
Road Capture HD 1080p

IP Rating
IP66