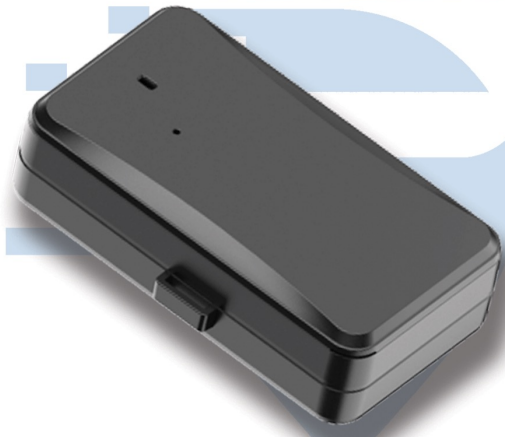


LL01

LTE Battery Powered Asset Tracker



Product Description



Introducing the LL01: an advanced Cat M1/NB-IoT asset tracker designed with two standout features —Slap-n-Track and a Rechargeable battery. With an emphasis on convenience, its rechargeable internal battery delivers an ultra-long standby time, offering up to 3 years of operation on a single charge, based on reporting frequency. The LL01's exceptional magnetic mount enables effortless installation on almost any metal surface using the "Slap-n-Track" technique. Additionally, equipped with a light sensor for tamper alerts, this tracker ensures constant asset protection, providing users with a heightened sense of security and peace of mind.

Product Features

- Strong Embedded Magnets
- Slap-n-Track
- IP65 Rugged Design
- 10,000mAh Rechargeable Battery
- Tamper Alerts
- Native Geotab Integration





Fueling your fleet with intelligence.

Product Specifications

Dimensions

4.29 x 2.40 x 1.20in
109.0 x 61.0 x 30.5mm

Weight

10.47oz
297g

Operating temperature

-4°F to 158°F
-20°C to +70°C

IP Rating

IP65

Installation

Strong Embedded Magnets
"Slap-n-Track", 3M tape, Mount tabs

Bluetooth

Optional BLE 5.0 Connectivity

Battery

10,000mAh/3.7V industrial-grade Li-Polymer rechargeable battery

Connectivity

LTE Cat M1/NB2: B1/B2/B3/B4/B5/B8/B12/B13/
B18/B19/B20/B26/B28/B66

Alerts

Tamper, Geofence, Cover removal

LED indication

Power/Status (Red), Battery (Blue)