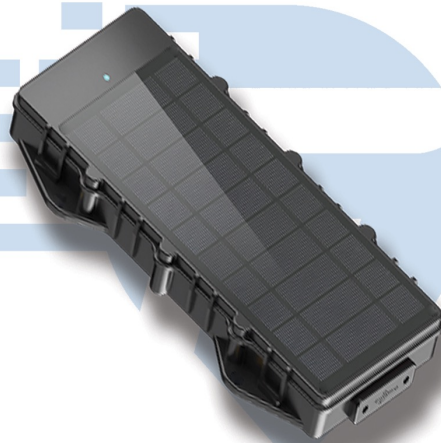


LL303

LTE SOLAR POWERED ASSET TRACKER



Product Description



Introducing the LL303: a cutting-edge 4G GPS tracker powered by solar energy, tailored for the efficient management of Construction Vehicles, Containers, and Trailers. Boasting a powerful solar panel, magnetic charger, and an impressive IP67 waterproof rating, this device is engineered for diverse deployments demanding extended standby periods and unwavering performance. Its standout feature lies in solar charging, ensuring continuous power and eliminating the need for frequent recharging. Ideal for sustained operations in challenging environments, the LL303 guarantees reliable, uninterrupted tracking for your assets.

Product Features

- Solar and Magnetic Charging
- Alerts- Low Battery, Tamper, Vibration
- IP67 Rugged Design
- 10,000 mAh battery
- BLE 5.0 Optional
- Native Geotab Integration





Fueling your fleet with intelligence.

Product Specifications

Dimensions

8.0 x 4.8 x 1.3in
203x122x33mm

Weight

19.33oz
548g

Operating temperature

-4°F to 158°F
-20°C to +70°C

IP rating

IP67

Solar power

5V/400mA

Bluetooth

Optional BLE 5.0 Connectivity

Battery

10,000mAh/3.7V industrial-grade
Li-Polymer rechargeable battery

Connectivity

LTE Cat M1
Cat M1: B2/B4/B5/B12/B13/B25/B26/B66

Alerts

Low battery, Tamper, Vibration

LED indication

Cellular (Green), Power (Red)