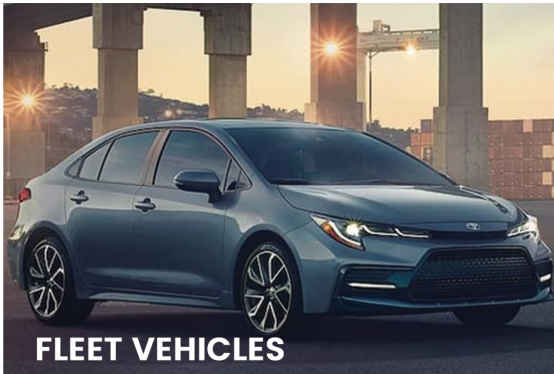


VL501 PLUG AND PLAY TRACKER



Product Description



Introducing the VL501: the ultimate plug-and-play tracker designed for seamless vehicle monitoring. Packed with GNSS, LTE, and Bluetooth connectivity, this device offers unparalleled convenience. Its effortless 12V power connector ensures hassle-free installation on any vehicle, making it an ideal choice for individuals and fleet managers alike. With its standout feature of remote tracking, it's perfect for those keen on monitoring their private vehicles. Whether it's for courier delivery, car rental, insurance telematics (UBI), or any other application, the VL501 puts vehicle tracking control right at your fingertips.

Product Features

- Plug-N-Play Install
- Alerts-Speeding, Geofence, GPS Fix
- Panic SOS Button
- 50mAh Backup Battery
- Charging Abilities
- Native Geotab Integration





Fueling your fleet with intelligence.

Product Specifications

Dimensions

2.75 x 2.04 x 3.24in
70.0 x 52.0 x 82.5mm

Weight

2.1oz
60g

Operating temperature

-4°F to 158°F
-20°C to +70°C

Input voltage

9-36VDC

Back up battery

50 mAh

Charging

Fast charge other devices via the USB or Type-C port

Memory

64MB

Connectivity

LTE-FDD (Cat 1): B2/B4/B5/B12/B13

Alerts

Collision, Vibration, Device Removal, Installation, Overspeed

LED indication

Power (Red) and SOS (Blue)