



RoadEasy Auxiliary Camera Install Guide

Introduction

The RoadEasy Auxiliary Camera system extends the capabilities of the RZ1 Hub by providing flexible, multi-angle video coverage across your fleet. These USB-connected cameras are designed to capture additional views such as rear, side, cargo, or cabin areas — enhancing visibility and supporting a safer, more transparent operation.

Once connected to the RZ1 Hub, auxiliary cameras become part of the vehicle's video monitoring system, allowing fleet managers to access live and recorded footage from key vantage points.

This step-by-step guide will walk you through installing and activating auxiliary USB cameras with the RZ1 Hub — whether you're adding side, rear, or interior coverage. You'll start by confirming required components, then mount and connect the cameras to ensure proper functionality.

This guide is intended for anyone installing auxiliary cameras — including professional technicians and fleet managers handling in-house installations. To begin, follow the steps below:

- *Step 1: Pre-Install Setup*
Confirm you have all required cameras, USB hub, SD card, and mounting tools.
- *Step 2: Mount & Wire*
Install the auxiliary cameras and connect them to the RZ1 via USB.

Key Features and Benefits

- **USB Plug-and-Play Integration**
Connects directly to the RZ1 Hub without the need for external power
- **Flexible Camera Placement**
Supports installation in various locations including rear, side, or internal compartments, based on operational needs.
- **Expanded Video Coverage**
Captures additional angles for improved visibility during reversing, lane changes, loading, or in-cabin monitoring.
- **Seamless Platform Compatibility**
Integrated with the RoadEasy platform for unified video access, event review, and storage.

Use Cases

- **Blind Spot Coverage**
Side-mounted auxiliary cameras help reduce risk by capturing footage from the vehicle's blind zones.
- **Rear View for Reversing**
Cameras mounted at the back provide video context during reversing, loading, or docking maneuvers.
- **Cabin or Cargo Monitoring**
Interior auxiliary cameras help monitor cargo integrity or cabin activity in specialized vehicles.
- **Regulatory Compliance**
Supports visibility standards for certain commercial vehicle types that require multi-angle video coverage.

USB Side Camera

The USB Side Camera delivers wide-angle, high-definition video to enhance fleet visibility and situational awareness. Designed for use on the sides of vehicles or within cargo areas, it connects directly to the RZ1 Hub and is built to withstand tough road environments.



Key Components



1. **Camera Unit Captures full HD (1920×1080)** - video with a 120° field of view. Designed for external or cargo-area mounting.
2. **Infrared (IR) LEDs** - Surround the lens to enhance night vision and low-light video performance. Automatically activate in dark environments.
3. **Mounting Base Plate** - Secures the camera to the vehicle surface. Installed first, then covered and fastened with screws for a stable fit.
4. **5-Meter USB Cable** - Provides both power and data transmission to the RZ1 Hub. Supports plug-and-play installation.

**USB Hub Required**

Auxiliary cameras must be connected through a USB hub to function with the RZ1.

**SD Card Required**

An SD card must be inserted in the RZ1 Hub to enable video recording from auxiliary cameras; to learn more, see [Using an SD Card with the RZ1 Hub](#).

USB Rectangle Camera

The USB Rectangle Camera delivers full HD video with a rugged, bracketed design suitable for a wide range of fleet applications. Built for harsh environments, it enhances rear, side, or cargo-area visibility and connects directly to the RZ1 Hub via USB for simple, plug-and-play integration.

Its versatile design allows it to be mounted almost anywhere on the vehicle — using screws through the bracket or secured with heavy-duty zip ties for non-permanent installations.



Key Components



1. **5-Meter USB Cable** – Provides both power and video transmission to the RZ1 Hub.
2. **Adjustable Mounting Bracket** – Allows flexible installation anywhere on the vehicle. Can be screwed into surfaces or tied securely using zip ties for quick, tool-free mounting.
3. **Camera Unit Captures full HD (1920×1080)** – Delivers wide-angle video with a 120° field of view. Protected by a rectangular hooded enclosure to shield against glare and debris.
4. **Infrared (IR) LEDs** – Surround the lens to provide low-light and nighttime visibility. IR automatically activates in dark conditions.



USB Hub Required

Auxiliary cameras must be connected through a USB hub to function with the RZ1.



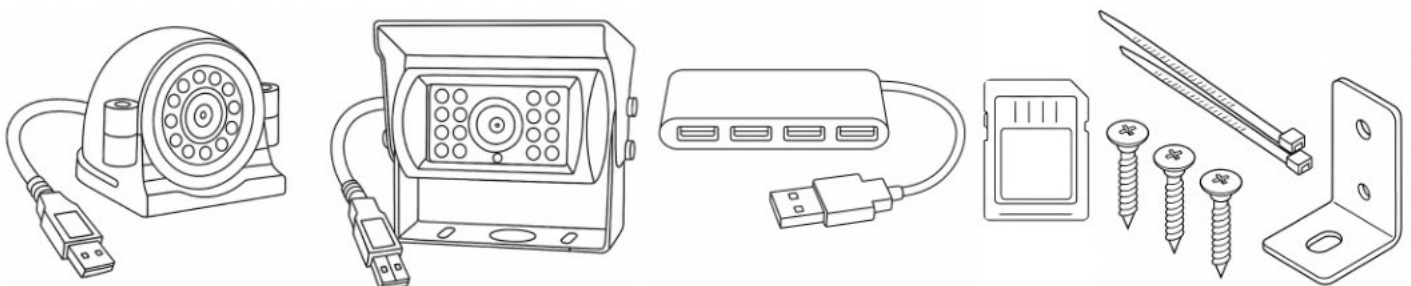
SD Card Required

An SD card must be inserted in the RZ1 Hub to enable video recording from auxiliary cameras; to learn more, see [Using an SD Card with the RZ1 Hub](#).

Step 1: Pre-Install Setup

Before starting the installation, make sure you have all required hardware and tools for connecting auxiliary cameras to the RZ1 Hub.

What You'll Need:



- One or more supported USB auxiliary cameras
- A USB hub (powered if installing more than 2 cameras)
- An SD card inserted into the RZ1
- Mounting hardware (screws, brackets, or heavy-duty zip ties)
- Access to the vehicle's RZ1 Hub
- Fleet App auxiliary configurations were completed

Step 2: Mount & Wire

Now that you've confirmed your equipment, it's time to mount the auxiliary cameras and connect them to the RZ1 Hub using the USB cable.

Mount the Cameras

Each auxiliary camera has a different mounting method. Follow the instructions below based on the model you're installing.

USB Side Camera

1. Attach the **mounting base plate** to the vehicle surface using screws.
2. Place the camera into the **designated circular slot** in the base plate.
3. Adjust the angle to point the camera in the desired direction.
4. Cover the assembly with the **top bracket** and secure it using the provided screws.
5. Ensure the camera's lens has a clear, unobstructed view.



Tip

This camera is ideal for side-view coverage or interior (cabin/cargo) monitoring.

USB Rectangle Camera

1. Position the camera using the **adjustable bracket** attached to the housing.
2. Mount the bracket to a flat surface using screws, or secure it with heavy-duty zip ties if needed.
3. Adjust the camera's angle using the side screws on the bracket.
4. Ensure the built-in protective hood is positioned to shield the lens from glare, rain, or debris.
5. Ensure the camera's lens has a clear, unobstructed view.



Tip

This camera is commonly used for rear-facing views or exterior side panels.

Connect to RZ1 via USB

1. Insert an SD card into the RZ1 Hub - If not already inserted, add a supported SD card.

SD Card Required

An SD card must be inserted in the RZ1 Hub to enable video recording from auxiliary cameras.

2. Connect the USB hub to the RZ1 Hub - Plug the USB hub into the USB port on the RZ1.

USB Hub Required

Auxiliary cameras must be connected through a USB hub to function with the RZ1.

3. Connect the auxiliary cameras to the USB hub - Use the built-in USB cables (5 meters) to connect each camera to the hub.
 - A non-powered USB hub supports up to 2 cameras
 - A powered USB hub supports up to 4 cameras

How to Enable Auxiliary Cameras

To record and access video from auxiliary USB cameras connected to the RZ1 Hub, you must first configure each vehicle in the Fleet App. This setup ensures the system knows how many cameras are installed and enables video capture, live streaming, and event association.

-
1. Log in to the Fleet App Use your admin credentials.

2. Find the Vehicle

- Go to the **Vehicles** page, or
- Click a vehicle from the **Map** and select **Edit Vehicle**

3. Open the Settings Tab

Inside the vehicle's profile, click on the **Settings** tab.

4. Set the Number of Auxiliary Cameras

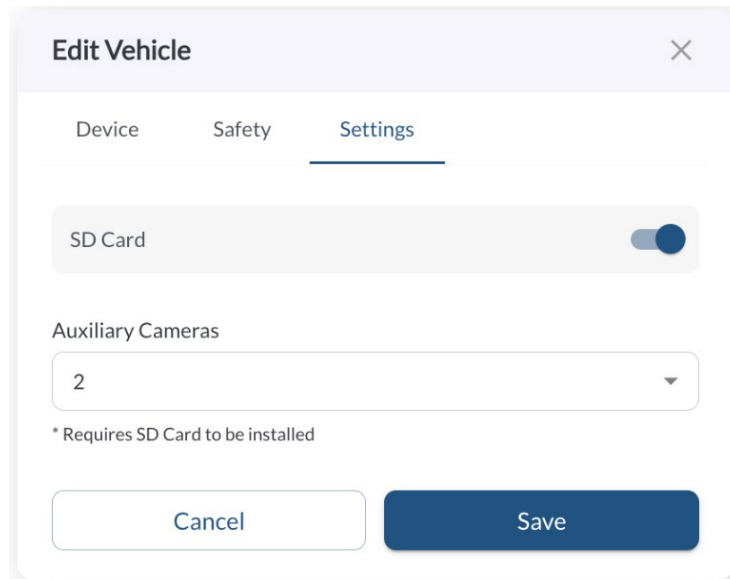
Scroll to the **Auxiliary Cameras** section and select how many cameras are connected (1–4).

5. Confirm SD Card Settings

- Ensure an SD card is inserted into the RZ1 Hub
- Verify the **SD Card toggle** is enabled in the vehicle settings

6. Save Changes

Click **Save** to apply the configuration.



Edit Vehicle ✕

Device Safety Settings

SD Card ☒

Auxiliary Cameras

2 ▼

* Requires SD Card to be installed

Cancel Save

Using an SD Card with the RZ1 Hub

The SD card is an optional add-on for the RZ1 system that extends local video storage capacity. It is required for recording footage from auxiliary cameras and helps increase the amount of event-based video that can be stored from the main RZ1 camera.

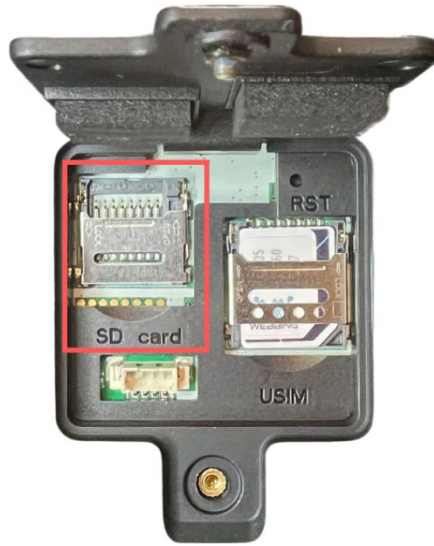
This article explains what the SD card is used for, how to install it, when it's needed, how to enable it in the Fleet App, and how to format it if necessary.

What is the SD Card Used For?

The SD card is used to extend the RZ1's memory capacity and increase the amount of video footage that can be recorded and stored locally. While the SD card is optional for the base RZ1 device, it is required for the operation of auxiliary cameras.

How to Add the SD Card Extension

1. Locate the cover at the bottom of the RZ1 Hub
2. Remove the screw and open the cover
3. Insert the SD card into the internal slot until it clicks
4. Close the tamper cover
5. Re-secure it with the screw

**Note**

Once inserted, enable SD card recording in the Fleet App to begin saving footage.

How to Enable SD Card Recording in the Fleet App

Once the SD card is installed:

1. Log in to the **Fleet App**
2. **Find the Vehicle**
 - Go to the **Vehicles** page, or
 - Click a vehicle from the **Map** and select **Edit Vehicle**
3. **Open the Settings Tab**

Inside the vehicle's profile, click on the **Settings** tab.
4. Toggle Enable SD Card Recording
5. Click **Save**

Edit Vehicle



Device

Safety

Settings

SD Card



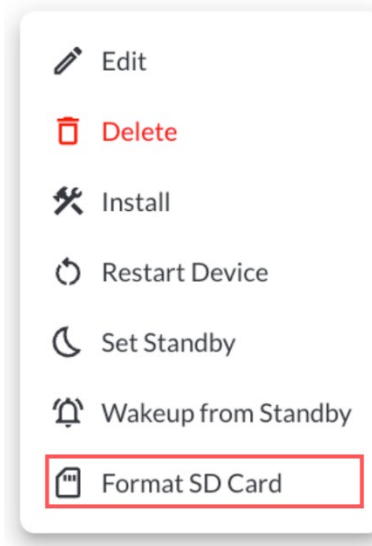
Cancel

Save

How to Format the SD Card

If you're reusing an SD card or experiencing recording issues, you can format it directly from the Fleet App.

1. Go to the **Vehicles** page
2. Click the **Quick Actions** menu (three dots) next to the vehicle Select



3. Format SD Card

Format SD Card ×

Are you sure you want to format the SD card for vehicle 123456789012345?

SD Status is: In Use

Cancel Format



Note

The Format SD Card option is only available if SD card recording is already enabled for the vehicle.



Warning

Formatting the SD card cannot be undone, and all stored footage will be permanently lost and cannot be recovered.